

## Focus on Your Data With Data Retreats

Gathering data. You do it all the time. With it, you've gained an expert understanding of how your school operates. But have you also capitalized on it to improve your students' learning?

Data Retreats, two-day leadership institutes, help you focus on the important data you've gathered and create the strategies you need for improvement. A Data Retreat guides you through the discovery and analysis of four types of school data:

- Student achievement
- Demographic
- Program
- Perception

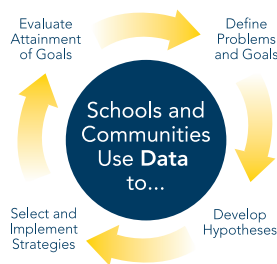
Our facilitators engage you in purposeful system analysis, and help you make solid and critical data-based decisions.

The end result? You've become an empowered educator—prepared to make your school or district better than ever!

### Data Retreats Are a Part of Your Improvement Cycle

The improvement cycle is a team effort.

Representatives from the local communities and local schools, including individual administrators and teachers, team up to decide school goals, school operations, and teaching and learning approaches. A Data Retreat synergistically aligns with the improvement cycle, as shown in the diagram at right.



### Why Should You Use Data to Improve Your School?

Real improvement begins when team members use data to clarify their goals. Data patterns can reveal system weaknesses and provide direction to combat those weaknesses. As the impact of strategies and practices is measured, collaborative and reflective data study allows for a deeper understanding of learning. Ongoing data study and team collaboration efforts perpetuate the improvement cycle.

### What Is a Data Retreat?

A Data Retreat is a two-day training opportunity that provides leadership teams with a unique opportunity to understand their data. Teams learn to:

- Analyze data through four lenses.
- Develop research-based strategies for improvement.
- Establish clear, data-based goals.
- Create an evaluation plan to measure results.

An annual Data Retreat provides continual professional development to education leaders when used as part of the ongoing improvement cycle. It offers a unique experience based on analyzed data and team dynamics.

### How Can a Data Retreat Help?

Successful leaders and their staff collect and use data to guide instructional decisions. Classroom teachers embed assessment of student learning into their instruction and adjust their lessons according to their learning data. Counselors and coordinators apply data-based discoveries to shaping special programs and extracurricular student activities.

Because in-depth, reflective data study is difficult to do during the busy school year, setting time aside for a Data Retreat empowers leadership teams to build a dynamic for focused improvement based on their data.

### Data Retreat Materials

The Data Retreat participants receive a *Participant's Guide* that includes the major guiding questions, worksheets, and charts used during the sessions.

### Build Your Staff's Capacity

To manage the Data Retreat process, Learning Point Associates also offers a **Data Retreat Facilitator Training** program for experienced staff development professionals. Trained facilitators receive a training manual and CD-ROM of useful tools that they can bring back to schools and districts.

Find out how Learning Point Associates Data Retreats can help you use data to improve student learning. Call 800-252-0283 or visit us at [www.learningpt.org](http://www.learningpt.org).

---

Knowledge.

Strategies.

Results.

In 2003, Learning Point Associates became a nationally and internationally focused education nonprofit organization. We are a resource for all education stakeholders and work directly with K–16 practitioners, policymakers, and funders to:

- Build research- and technology-based products, tools, and resources.
- Deliver capacity-building professional services and technical assistance.
- Conduct high-integrity evaluation and policy research.

In 1984, Learning Point Associates was founded as the North Central Regional Educational Laboratory (NCREL®), one of the 10 regional educational laboratories funded by the U.S. Department of Education. The organization was chartered to perform and deliver research, development, technical assistance, and policy activities to address critical education issues for the seven-state Midwest region (Illinois, Indiana, Iowa, Michigan, Minnesota, Ohio, and Wisconsin). NCREL continues as a wholly owned subsidiary of Learning Point Associates.

**Learning Point Associates core competencies are:**

- Adolescent Literacy
- Afterschool Programming
- Information Systems for School Improvement
- K–12 Comprehensive School Improvement
- Teaching and Teacher Quality
- Technology Integration, Standards, and Assessment



800-252-0283  
www.learningpt.org  
1120 East Diehl Road, Suite 200  
Naperville, IL 60563-1486

Naperville > Chicago > Washington, D.C.